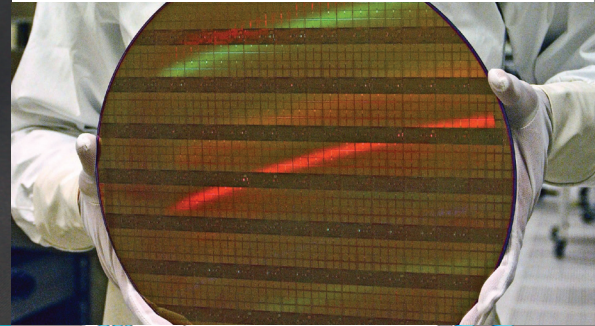




FURON®
Pure Performance



Furon® RDVM & SMDVM

Self-Manifolding Distribution Valve

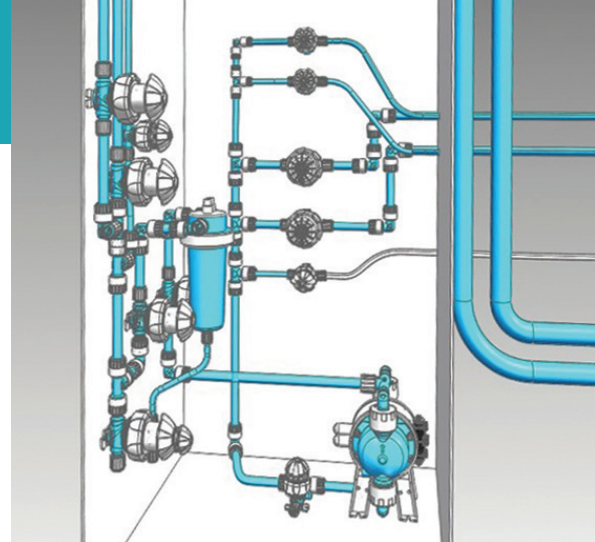
Description

Furon high-purity, PFA injection molded RDVM and SMDVM Rolling Diaphragm Valves offer a revolutionary new concept in high flow fluid handling systems. RDVM and SMDVM Valves, combined with the Furon Universal fitting system, allow system integrators the unique ability to quickly configure and assemble custom valve manifolds utilizing standard off-the-shelf valves and fittings.

The RDVM 2-way valve can be utilized as a stand-alone valve featuring a small footprint and high flow rate, or can be used in conjunction with the SMDVM. The SMDVM 2-way valve offers an additional 3rd or 4th port that supports self-manifolding of multiple valves.

Applications

- Bulk Chemical Delivery Systems and Chemical Distribution Systems in Semiconductor fabs
- Valve boxes
- Chemical processing applications
- Ultrapure deionized water applications
- Suitable for use in abrasive slurry



Features and Benefits

- High flow factor, Cv 15
- 100% PFA HP and Virgin PTFE wetted flow path
- Patented rolling diaphragm technology
- Modular design allows for easy maintenance
- Visual position indicator standard on manual and pneumatic versions
- Quick-release, non-metallic 8-position mounting base
- Non-gender, close coupled space saver fittings
- 2-Way Valve available in 3-port and 4-port configurations
- RDVM valve designs have been tested for more than 1 million cycles

ASK AN ENGINEER


SAINT-GOBAIN

Furon RDVM & SMDVM Valve

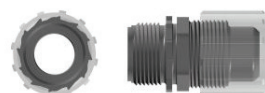
Part Number	Actuation	Flow Path	Number of Ports	End Connection	Orifice (in.)	Port Size
RDVM2-16NC	Pneumatic	Normally Closed	2	Universal	1	Select from Table Below
RDVM2-16NO	Pneumatic	Normally Open	2	Universal	1	
RDVM2-16MT	Multi-Turn	Manual	2	Universal	1	
SMDVM3-16NC	Pneumatic	Normally Closed	3	Universal	1	
SMDVM3-16NO	Pneumatic	Normally Open	3	Universal	1	
SMDVM3-16MT	Multi-Turn	Manual	3	Universal	1	
SMDVM4-16NC	Pneumatic	Normally Closed	4	Universal	1	
SMDVM4-16NO	Pneumatic	Normally Open	4	Universal	1	
SMDVM4-16MT	Multi-Turn	Manual	4	Universal	1	

Furon Universal Fittings (one required for each end connection)

Part Number	End Connection	Size (in.)	Hex Size (in.)	Ratchet
UTG16F8N-1	FlareGrip II'	1/2	1.25	YES
UTG12F12N-1	FlareGrip II'	3/4	1.25	YES
UTG16F16N-1	FlareGrip II'	1	1.25	YES
UTG16FF8N-1	FlareGrip II' Female	1/2	1.25	YES
UTG16FF12N-1	FlareGrip II' Female	3/4	1.25	YES
UTG16FF16N-1	FlareGrip II' Female	1	1.25	YES
MTG16F8N-1	FlareGrip II'	1/2	1.50	NO
MTG16F12N-1	FlareGrip II'	3/4	1.50	NO
MTG16F16N-1	FlareGrip II'	1	1.50	NO
MTG16FF8N-1	FlareGrip II' Female	1/2	1.50	NO
MTG16FF12N-1	FlareGrip II' Female	3/4	1.50	NO
MTG16FF16-1	FlareGrip II' Female	1	1.50	NO

UTG Fittings Features

- 1.25" Hex
- Ratchet on End Connection Fittings (Flare)
- No O-Ring
- Short Tongue & Groove Interface



MTG Fittings Features

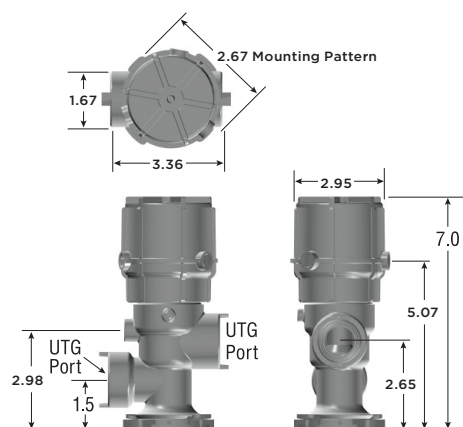
- 1.50" Hex
- No Ratchet on End Connection Fittings (Flare)
- ChemRaz™ O-Ring
- Long Tongue & Groove Interface



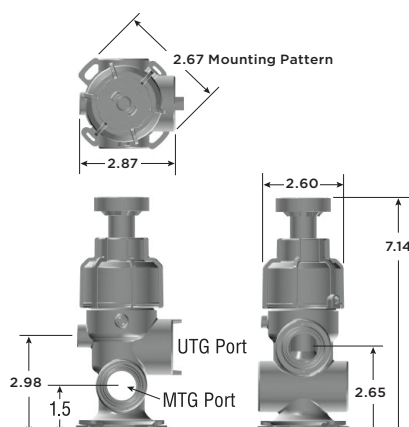
Standard Options

- Available with our without purge ports (add -001 to indicate purge port or -002 to indicate no purge port)
- Fiber optic position indicator on pneumatic valves.
- Other end connection types. [Please consult factory](#) for further details >>

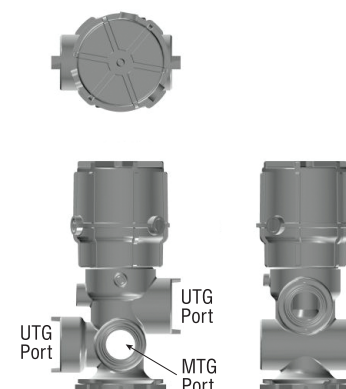
RDVM / SMDVM Port Locations (UTG vs. MTG Fittings)



RDVM2-16NC



SMDVM3-16MT



SMDVM4-16NC

Furon Couplers & Plugs (one required per valve stick)

Part Number	Type	End Connection	Size (in.)	Hex Size (in.)	Ratchet
UTG16SU	Coupler	Universal	1	1.25	YES
UTG16MTG16SU	Coupler	Universal	1	1.25	YES
MTG16SU	Coupler	Universal	1	1.25	NO
MTG Plug	Plug	Universal	1	1.25	NO

Coupler/Plugs



UTG16SU

Used to connect multiple valves on a single stick (UTG port to UTG Port connection).



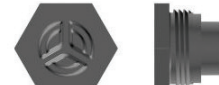
UTG16MTG16SU

Used to connect a UTG port on one valve to a MTG port on another valve.



MTG16SU

Used to connect MTG ports on two valves. Commonly used to add a valve stick to a manifold assembly.



MTG Plug

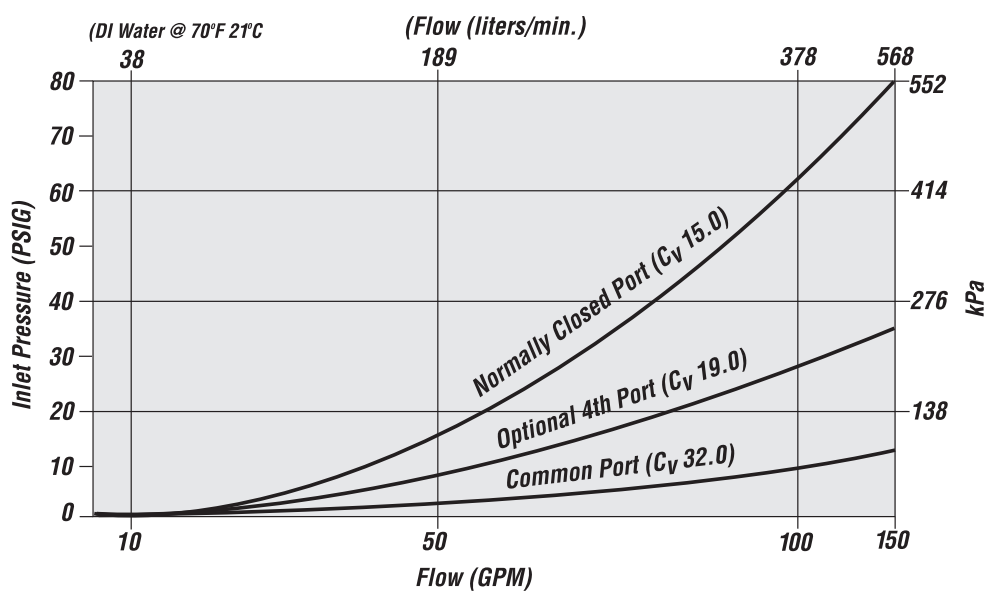
Used to plug the MTG port on the last valve stick in the manifold.

Operating Specifications

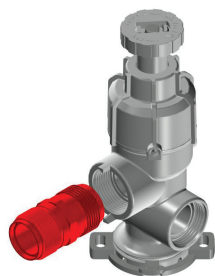
Operating Pressure	100 psig (6.9 bar)
Back Pressure	100 psig (6.9 bar)
Flow	Up to 15
Operating Temperature	212° F (100° C)
Actuator Pressure (Pneumatic Version)	60-90 psig (4.1-6.2 bar)
Body	PFA
Diaphragm	Modified PTFE
Actuator Housing	Polypropylene
Spare/PM Kit	Pneumatic Normally Closed: 1112548 Pneumatic Normally Open: 1112975 Manual Multi-Turn: 1112550

HCl more than 450 thousand cycles

Inlet Pressure Vs. Flow



Assembly Example



Step 1

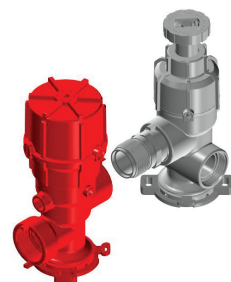
Start with a Manual SMDVM PN 1109180-002 (No Purge port)

Thread UTG16SU Coupler, PN 1109225-003 into SMDVM NO (UTG) port until snug, approximately 4.5 - 5 turns, this will allow "clocking" of valves.



Step 4

Use MTG Plug PN: 1109616 in the MTG port you would like capped off. Thread the fitting into the valve body until the tongue and groove engages... then turn another 1/2 to full turn.

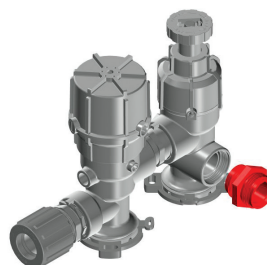


Step 2

2nd Valve: RDVM PN 1109177-002 (No Purge port)

Turn RDVM approximately 5 turns until the tongue and groove interface makes contact...then continue turning until valves are aligned. There should be 1/2 turn to clock valves (Clockwise)

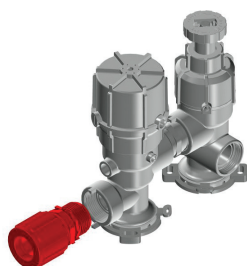
1. Port to port dim. 0.93"-0.95"



Step 5

Thread MTG16SU Coupler, PN 1107019 into SMDVM Common port until snug, approximately 1 - 1.5 turns, this will allow proper "clocking" of valves.

The MTG fittings uses a similar tongue and groove design to the Universal fitting (UTG) but they are not interchangeable. The SMDVM common port uses a Chemraz™ O-ring as a secondary containment.

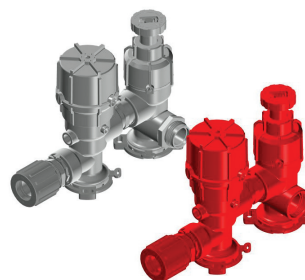


Step 3

This configuration uses PN: 1110681-1 a 1" Fine Thread Flare by 1" UTG. Thread the Universal Fitting clockwise until the ratchet engages to the valve body.

Notes:

1. 18 clicks past ratchet engagement to seal the fitting.



Step 6

Our Manifold configuration is made up of two identical valve sticks consisting of a manual and pneumatic valve. Thread the MTG16SU Coupler into the mating SMDVM Common port. Turn the second valve stick approximately 2.5 turns until the tongue and groove interface makes contact... then continue turning until valves are aligned. There should be 1/2 turn to clock valves (Clockwise)

1. Port to port dim. 0.42"- 0.44"



Saint-Gobain Performance Plastics

7301 Orangewood Avenue
Garden Grove, CA 92841

1-800-833-5661

Tel: (714) 630-5818

Fax: (714) 688-2614

www.processsystems.saint-gobain.com

NOTE: The data and details given in this document are correct and up to date. This document is intended to provide information about the product and possible applications. This document is not the product specification and does not provide specific features, nor does it guarantee product performance in specific applications. Saint-Gobain cannot anticipate or control the conditions of the field and for this reason strongly recommends that practical tests are conducted to ensure that the product meets the requirements of a specific application.

Furon®, FlareGrip® and FuseBond™ are registered trademarks of Saint-Gobain Performance Plastics. Super 300® is a registered trademark of Nippon Pillar Packaging Co. LTD.

IMPORTANT: It is the user's responsibility to ensure the suitability and safety of Saint-Gobain Performance Plastics products for all intended uses and that the components to be used comply with all applicable regulatory requirements. Saint-Gobain Performance Plastics assumes no responsibility for any product failures that occur due to misuse arising out of the design, fabrication or application of the products into which they are incorporated.

WARRANTY: For a period of 12 months from the date of first sale, Saint-Gobain Performance Plastics warrants this product to be free of defects in materials and workmanship. The only obligation under any applicable product warranty will be to replace any portion proving defective, or at our option, to refund the purchase price thereof. THIS IS THE EXCLUSIVE WARRANTY AND IS EXPRESSLY IN LIEU OF ANY AND ALL OTHER OBLIGATIONS, GUARANTEES, WARRANTIES AND REPRESENTATIONS. SAINT-GOBAIN PERFORMANCE PLASTICS DISCLAIMS ALL IMPLIED WARRANTIES OF MERCHANTABILITY AND FITNESS FOR A PARTICULAR PURPOSE.