



LT Gas Mixer

smart-series: Gas Mixer without buffer vessel

for flammable or non-flammable gases

- Gas mixer in field cabinet for wall mounting
- $p_1=12-25$ barg
- $p_2=2-8$ barg
- Maximal performance: 15, 25, 50, 100, 200 or 300 Nm³/h, indicated as maximum continuous gas mix production quantity
- Gas mix reproducibility $\pm 0,5$ Vol%
- No dependency of gas mix quality from outlet pressure
- Gas mixer for 2 gases: 2 inlets, connection as clamping ring connection for pipe OD18mm
- Gas mixer for 3 gases: 3 inlets, connection as clamping ring connection for pipe OD18mm
- Integrated compensation of significant inlet pressure differences (≥ 3 bar), because in every gas inlet line one LTD-1 dome loaded pressure regulator homogenizes the gas pressures: Saving of further regulators including their fittings
- Variable-area flowmeter and pressure gauge
- 1 outlet connection as clamping ring connection for pipe OD18mm
- Without buffer vessel
- Mixing ratio adjustable
- Visual display of operating parameters integrated for pressure and volume flow
- Pressurized metallic components with verified low-temperature toughness
- All gas-carrying pipes in copper
- Reliability: Automatic shut-off the admixing gas on carrier gas failure
- Suitable for indoor and outdoor installations
- Without gas analysis
- Dimensions WxHxD 800x1000x400 mm
- Weight approx. 100 kg

Gas Mixer for 2 non-flammable gases - without buffer vessel			
	15 Nm ³ /h	GM-15-2-smart	2-5110
	50 Nm ³ /h	GM-50-2-smart	2-5310
	100 Nm ³ /h	GM-100-2-smart	2-5410
Gas Mixer for 2 flammable gases - with 90 Liter buffer vessel in stainless steel, 10 bar			
	15 Nm ³ /h	GMB-15-2-E-smart	2-5170
	50 Nm ³ /h	GMB-50-2-E-smart	2-5370
	100 Nm ³ /h	GMB-100-2-E-smart	2-5470



smart-series: Gas Mixer with 90 Liter, 10 bar stainless steel buffer vessel
for flammable or non-flammable gases

- Gas mixer in field cabinet for location on the floor
- $p_1=12-25$ barg
- $p_2=2-8$ barg
- Maximal performance: 15, 25, 50, 100, 200 or 300 Nm³/h, indicated as maximum continuous gas mix production quantity
- Gas mix reproducibility $\pm 0,5$ Vol%
- No dependency of gas mix quality from outlet pressure
- Integrated buffer vessel: Vessel 90 Liter, stainless steel, 10 bar; other vessels upon request
- With safety relief valve 10 bar
- Gas mixer for 2 gases: 2 inlets, connection as clamping ring connection for pipe OD18mm
- Gas mixer for 3 gases: 3 inlets, connection as clamping ring connection for pipe OD18mm
- Integrated compensation of significant inlet pressure differences (≥ 3 bar), because in every gas inlet line one LTD-1 dome loaded pressure regulator homogenizes the gas pressures: Saving of further regulators including their fittings
- Variable-area flowmeter and pressure gauge
- 1 outlet connection as clamping ring connection for pipe OD18mm
- Mixing ratio adjustable
- Pressurized metallic components with verified low-temperature toughness
- All gas-carrying pipes in copper
- Reliability: Automatic shut-off the admixing gas on carrier gas failure
- Suitable for indoor and outdoor installations
- Without gas analysis
- Dimensions WxHxD 820x1700x510 mm
- Weight approx. 220 kg

Gas Mixer for 2 non-flammable gases - with 90 Liter buffer vessel in stainless steel, 10 bar			
	15 Nm ³ /h	GM-15-2-E-smart	2-5130
	50 Nm ³ /h	GM-50-2-E-smart	2-5330
	100 Nm ³ /h	GM-100-2-E-smart	2-5430
Gas Mixer for 2 flammable gases - without buffer vessel			
	15 Nm ³ /h	GMB-15-2-smart	2-5150
	50 Nm ³ /h	GMB-50-2-smart	2-5350
	100 Nm ³ /h	GMB-100-2-smart	2-5450

Options:

- Filter as additional protection in every gas inlet pipe
- Conformity declaration EMV/low voltage directive
- Conformity declaration ATEX (in the EU necessary for flammable gases)
- Gas mixer with buffer vessel:
 - Additional price for blow off pipe incl. valves
(necessary according to pressure equipment directive if the Gas Mixer has a door)
 - buffer bypass pipe incl. valves
 - Conformity declaration pressure equipment (PED)
 - TÜV conformity declaration (PED) module G
- Packaging
- Operating manual in printed version and on CD
- Gas Mixer in a field cabinet with lockable glassed door
- LT GasAnalyzer
- Gas analyzer of other producers (e. g. Siemens, ABB...)

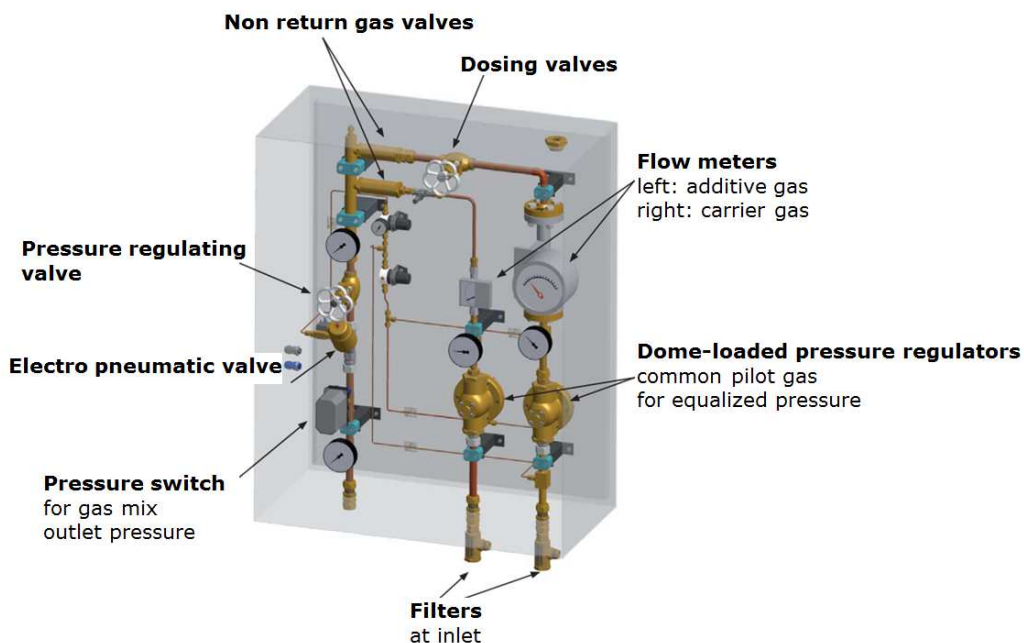




comfort-series: Gas Mixer without buffer vessel

für Brennbare oder Nichtbrennbare Gase

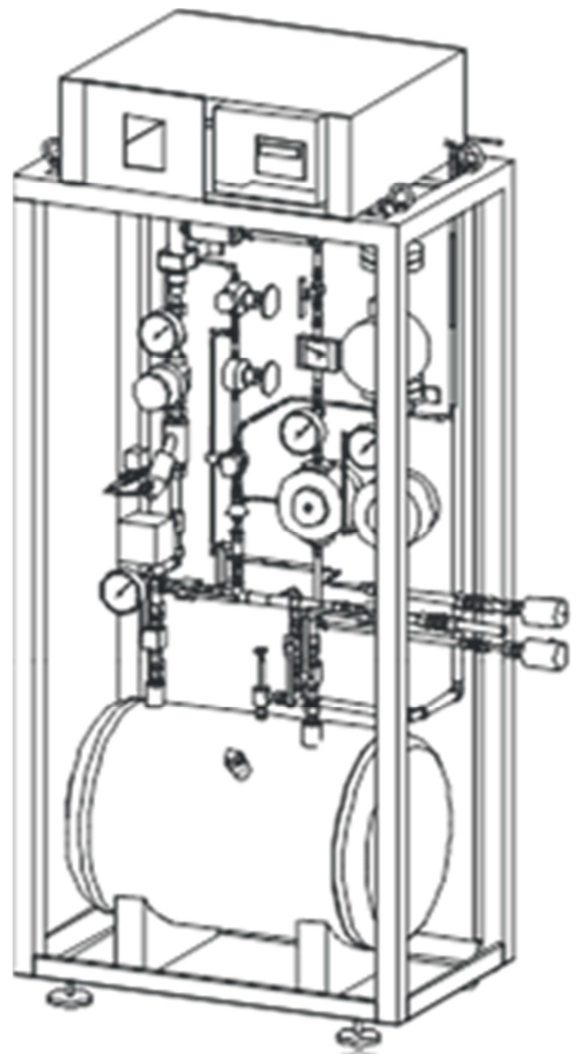
- Gas mixer in field cabinet with lockable door with viewing window for wall mounting
- $p_1=12-25$ barg
- $p_2=2-8$ barg
- Maximal performance: 15, 25, 50, 100, 200 or 300 Nm³/h, indicated as maximum continuous gas mix production quantity
- Gas mix reproducibility $\pm 0,5$ Vol%
- No dependency of gas mix quality from outlet pressure
- Gas mixer for 2 gases: 2 inlets, connection as clamping ring connection for pipe OD18mm
- Gas mixer for 3 gases: 3 inlets, connection as clamping ring connection for pipe OD18mm
- Gas filter in every gas inlet
- Integrated compensation of significant inlet pressure differences (≥ 3 bar), because in every gas inlet line one LTD-1 dome loaded pressure regulator homogenizes the gas pressures: Saving of further regulators including their fittings
- Variable-area flowmeter and pressure gauge
- 1 outlet connection as clamping ring connection for pipe OD18mm
- Without buffer vessel
- Mixing ratio adjustable
- All pressurized metallic components suitable for -196°C
- All gas-carrying pipes in copper
- Reliability: Automatic shut-off the admixing gas on carrier gas failure
- Suitable for indoor and outdoor installations
- Without gas analysis
- Conformity declaration pressure equipment (PED)
- TÜV conformity declaration (PED) module G
- Packaging
- Operating manual in printed version and on CD
- Dimensions WxHxD 800x1000x400 mm
- Weight approx. 100 kg



Gas Mixer for 2 non-flammable gases - without buffer vessel			
	15 Nm ³ /h	GM-15-2-comfort	2-0015
	25 Nm ³ /h	GM-25-2-comfort	2-0025
	50 Nm ³ /h	GM-50-2-comfort	2-0050
	100 Nm ³ /h	GM-100-2-comfort	2-0100
	200 Nm ³ /h	GM-200-2-comfort	2-0150
	300 Nm ³ /h	GM-300-2-comfort	2-0250
Gas Mixer for 3 non-flammable gases - without buffer vessel			
	15 Nm ³ /h	GM-15-3 comfort	2-0150
	25 Nm ³ /h	GM-25-3 comfort	2-2250
	50 Nm ³ /h	GM-50-3 comfort	2-0500
	100 Nm ³ /h	GM-100-3 comfort	2-0300
	200 Nm ³ /h	GM-200-3 comfort	2-0410
	300 Nm ³ /h	GM-300-3 comfort	2-0710
Gas Mixer for 2 flammable gases - ohne Pufferbehälter			
	15 Nm ³ /h	GMB-15-2-comfort	2-0017
	25 Nm ³ /h	GMB-25-2-comfort	2-0027
	50 Nm ³ /h	GMB-50-2-comfort	2-0052
	100 Nm ³ /h	GMB-100-2-comfort	2-0120
	200 Nm ³ /h	GMB-200-2-comfort	2-0420
	300 Nm ³ /h	GMB-300-2-comfort	2-0720
Gas Mixer for 3 flammable gases - ohne Pufferbehälter			
	15 Nm ³ /h	GMB-15-3 comfort	2-0023
	25 Nm ³ /h	GMB-25-3 comfort	2-0028
	50 Nm ³ /h	GMB-50-3 comfort	2-0053
	100 Nm ³ /h	GMB-100-3 comfort	2-0130
	200 Nm ³ /h	GMB-200-3 comfort	2-0430
	300 Nm ³ /h	GMB-300-3 comfort	2-0730

comfort-series: Gas Mixer with 90 Liter, 25 bar stainless steel buffer vessel
for flammable or non-flammable gases

- Gas Mixer in a field cabinet with lockable glassed door for location on the floor
- $p_1=12-25$ barg
- $p_2=2-8$ barg
- Maximal performance: 15, 25, 50, 100, 200 or 300 Nm³/h, indicated as maximum continuous gas mix production quantity
- Gas mix reproducibility $\pm 0,5$ Vol%
- No dependency of gas mix quality from outlet pressure
- Integrated buffer vessel: Vessel 90 Liter, stainless steel, 25 bar; other vessels upon request
- With safety relief valve 25 bar and blow off pipe incl. valves
- Buffer bypass pipe incl. valves
- Gas mixer for 2 gases: 2 inlets, connection as clamping ring connection for pipe OD18mm
- Gas mixer for 3 gases: 3 inlets, connection as clamping ring connection for pipe OD18mm
- Gas filter in every gas inlet
- Integrated compensation of significant inlet pressure differences (≥ 3 bar), because in every gas inlet line one LTD-1 dome loaded pressure regulator homogenizes the gas pressures: Saving of further regulators including their fittings
- Variable-area flowmeter and pressure gauge
- 1 outlet connection as clamping ring connection for pipe OD18mm
- Mixing ratio adjustable
- All pressurized metallic components suitable for -196°C
- All gas-carrying pipes in copper
- Reliability: Automatic shut-off the admixing gas on carrier gas failure
- Suitable for indoor and outdoor installations
- Without gas analysis
- Conformity declaration EMV/low voltage directive
- Conformity declaration ATEX (in the EU necessary for flammable gases)



- Conformity declaration pressure equipment (PED)
- TÜV conformity declaration (PED) module G
- Packaging
- Operating manual in printed version and on CD
- Dimensions WxHxD 820x1700x510 mm
- Weight approx. 220 kg

Options

- LT GasAnalyzer
- Gas analyzer of other producers (e. g. Siemens, ABB...)

Gas Mixer for 2 non-flammable gases - with 90 Liter buffer vessel in stainless steel, 25 bar			
	15 Nm³/h	GM-15-2-E-comfort	2-3130
	25 Nm³/h	GM-25-2-E-comfort	2-3230
	50 Nm³/h	GM-50-2-E-comfort	2-3330
	100 Nm³/h	GM-100-2-E-comfort	2-3530
	200 Nm³/h	GM-200-2-E-comfort	2-3630
	300 Nm³/h	GM-300-2-E-comfort	2-3730
Gas Mixer for 3 non-flammable gases - with 90 Liter buffer vessel in stainless steel, 25 bar			
	15 Nm³/h	GM-15-3-E-comfort	2-3135
	25 Nm³/h	GM-25-3-E-comfort	2-3235
	50 Nm³/h	GM-50-3-E-comfort	2-3335
	100 Nm³/h	GM-100-3-E-comfort	2-3535
	200 Nm³/h	GM-200-3-E-comfort	2-3635
	300 Nm³/h	GM-300-3-E-comfort	2-3735
Gas Mixer for 2 flammable gases - with 90 Liter buffer vessel in stainless steel, 25 bar			
	15 Nm³/h	GMB-15-2-E-comfort	2-3140
	25 Nm³/h	GMB-25-2-E-comfort	2-3240
	50 Nm³/h	GMB-50-2-E-comfort	2-3340
	100 Nm³/h	GMB-100-2-E-comfort	2-3540
	200 Nm³/h	GMB-200-2-E-comfort	2-3640
	300 Nm³/h	GMB-300-2-E-comfort	2-3740
Gas Mixer for 3 flammable gases - with 90 Liter buffer vessel in stainless steel, 25 bar			
	15 Nm³/h	GMB-15-3-E-comfort	2-3145
	25 Nm³/h	GMB-25-3-E-comfort	2-3245
	50 Nm³/h	GMB-50-3-E-comfort	2-3345
	100 Nm³/h	GMB-100-3-E-comfort	2-3545
	200 Nm³/h	GMB-200-3-E-comfort	2-3645
	300 Nm³/h	GMB-300-3-E-comfort	2-3745



Gas Analyzers

LT GasAnalyzer stationary

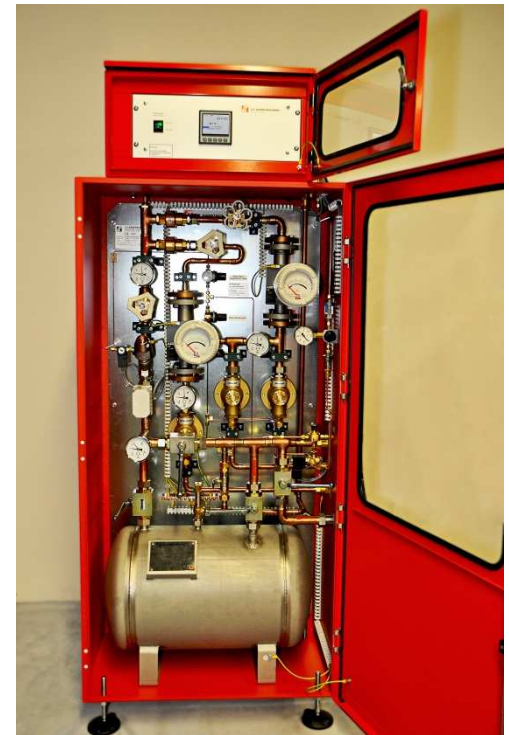
including installation and integration in the LT Gas Mixer

- Complete analysis system (analyzer and PLC) ready for operation, mounted in 19" 4 height units rack mount chassis, integrated in steel cabinet with lockable glassed door)
- One sensor WLD, NDIR or ZrO₂
- 4" color-LCD touch screen (7" optionally)
- USB slot or SD-slot on the housing front
- Data logging
- 2 analogue inputs, 2 analogue outputs
- 6 binary outputs, 12 binary inputs
- Modbus RTU or CanOpen interface
- Electrical connection 230 V, 50 Hz
- Dimensions WxHxD 600x200x500 mm
- Weight approx.. 34 kg



Options

- Further sensors WLD, NDIR or ZrO₂
- Paramagnetic sensor
- Wall field cabinet with wall brackets
- Heating of the case incl. thermostat (for outdoor installations)
- Equipment for fuel gases (bidirectional interface for the ex-zone)
- Measuring gas processing
- Measuring gas processing with additional solenoid valves incl. control for automatic switching between measured gas, zero gas and calibration gas
- Profibus Slave
- Profibus Master
- Analogue output module (2 x 0-10V or 0/4-20mA)
- 8 channel binary I/O's (4 x in, 4 x relays out)
- Analogue input module with 4 inputs (thermocouple / RTU / 0-10V / 0-20mA)"





LT GasAnalysator Mobil

- Complete analysis system (analyzer and PLC) ready for operation in a small mobile housing
- One sensor WLD, NDIR or ZrO₂
- Color-LCD touch screen
- Calibration-Interface RS232
- Limit-LED
- 1 analogue output
- Dimensions WxHxD 250 x200 x200 mm
- Weight approx. 4 kg

