

Gauge Valves - EG35

GAUGE VALVES

The EG35 gauge valve, with a female or male inlet, female or male outlet and integral vent valve, meets the application requirement for a block and bleed valve without the need for a close nipple when connecting to a female port on a gauge pressure transmitter. The male outlet configuration provides one less threaded connection and therefore one less potential leak point.

Other manufacturers generally supply 1/2" NPT female instrument connections on gauge valve installations. This usually requires the installation of a 1/2" stainless steel close nipple with each gauge or pressure transmitter.

Product Availability

All valves are available with integral hard seats, 316-NACE stainless steel body and trim and Teflon or Graphite packing.

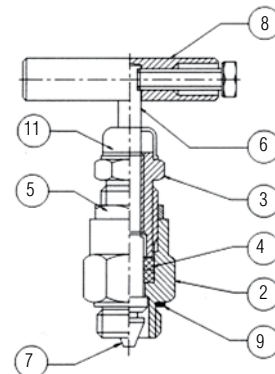
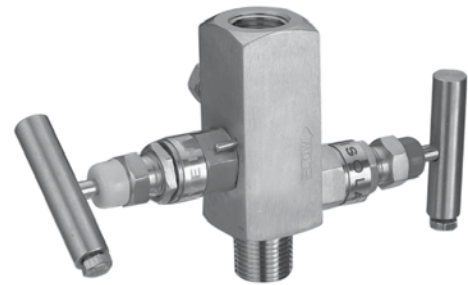
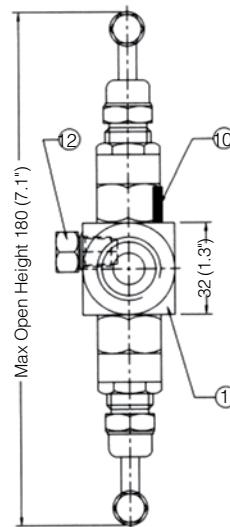
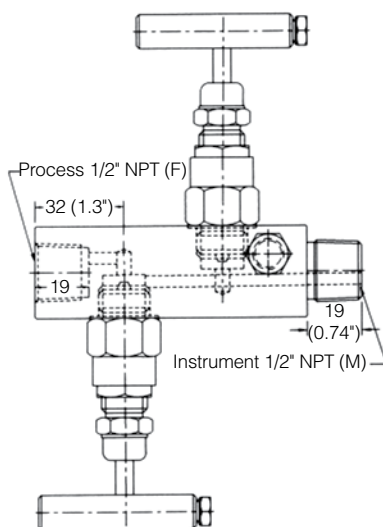
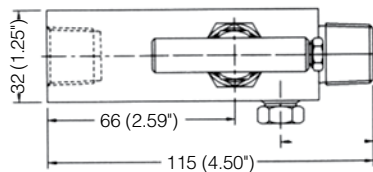
Hastelloy C, Monel models (see order grid) available upon request.

Ratings

Stainless Steel with TFE Packing:

6000 psig @ 100°F (414 bar @ 38°C)

4200 psig @ 400°F (290 bar @ 204°C)



No.	Description	Material	Qty
1	Body	SS316/NACE	1
2	Gland Body	SS316/NACE	2
3	Gland Retainer	SS304	2
4	Gland Seal	PTFE	4
5	Check Nut	SS304	2
6	Spindle	SS316/NACE	2
7	Trim	SS316/NACE	2
8	Handle	SS304	2
9	Washer	SS	2
10	Lock Pin	SS304	2
11	Dust Cap	PVC	2
12	1/4" NPT Plug	SS316/NACE	1

Note: Other materials and options available

MODEL	BODY CONFIG.	BODY MAT'L	INLET SIZE	INLET TYPE	OUTLET SIZE	OUTLET TYPE	STEM/TIP	SEAT MAT'L	PACKING
EG35	1	D	3	1	3	7	3	1	2

MODEL	TYPE
EG35	Standard

5	BODY
1	Hard Seat

6	BODY MATERIAL
D	316-NACE
H	Hastelloy C
M	Monel

7	INLET SIZE
3	1/2"

8	INLET TYPE
1	MNPT
3	FNPT

9	OUTLET SIZE
3	1/2"

10	OUTLET TYPE
1	FNPT
7	MNPT

11	STEM/TIP
3	316-NACE/316-NACE
B	Monel/Monel
D	Hastelloy C/Hastelloy C

12	SEAT MATERIAL
1	Integral Seat

13	PACKING
2	TFE
3	Graphite

Flow Schematic

